

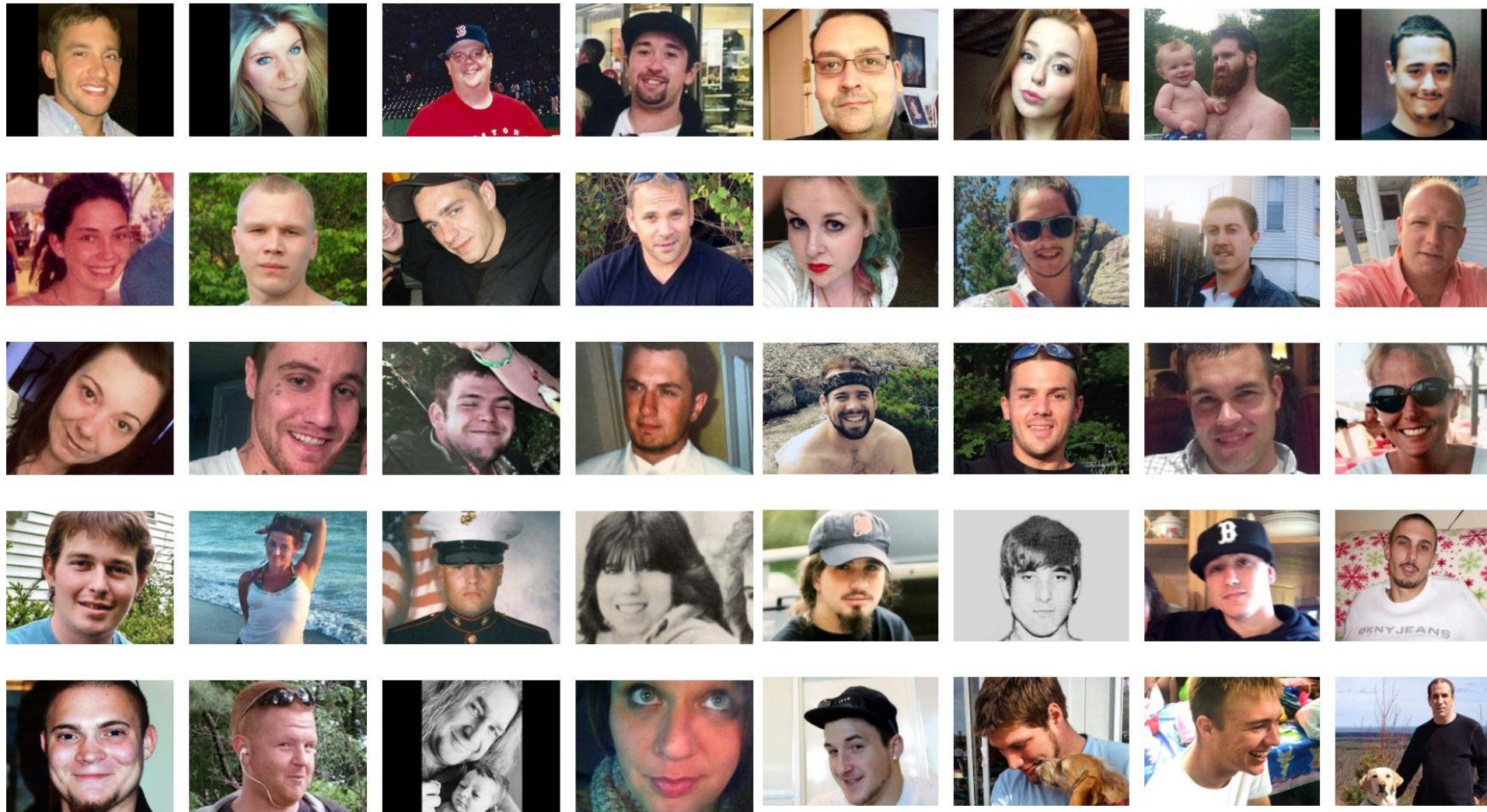
# **Maine's Opioid Epidemic: Building a Stronger, Statewide, Recovery-Oriented System of Care**

CCSME

Lisa M. Letourneau

March 2018

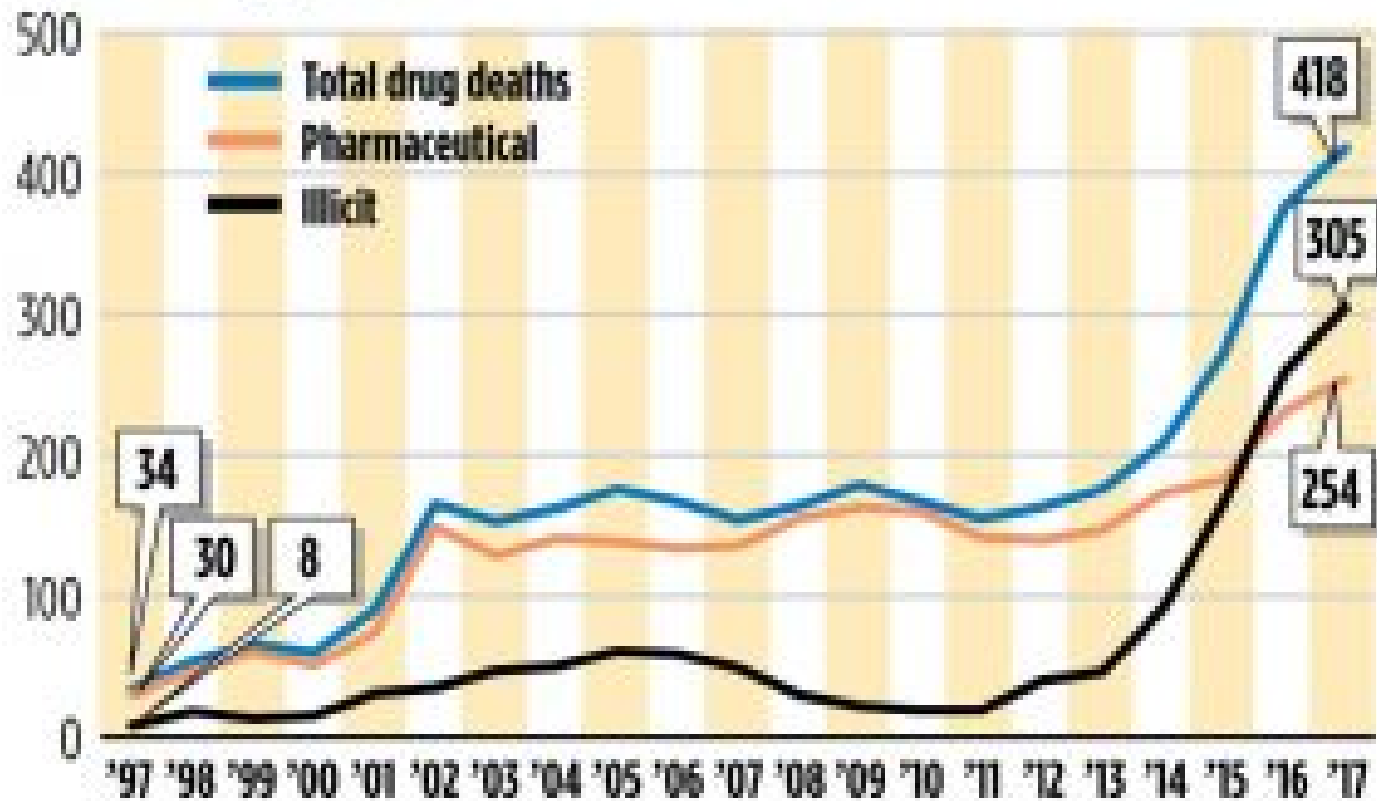
# Why We're Here



Source: Portland Press Herald – reproduced with permission from Toho Soma, UNE

# Drug deaths in Maine

The number of overdose deaths hit a record 418 in 2017. Opioids, both illicit and prescription, were responsible for the vast majority of fatal overdoses. In many cases, more than one drug was listed as a cause of death or significant contributing factor.

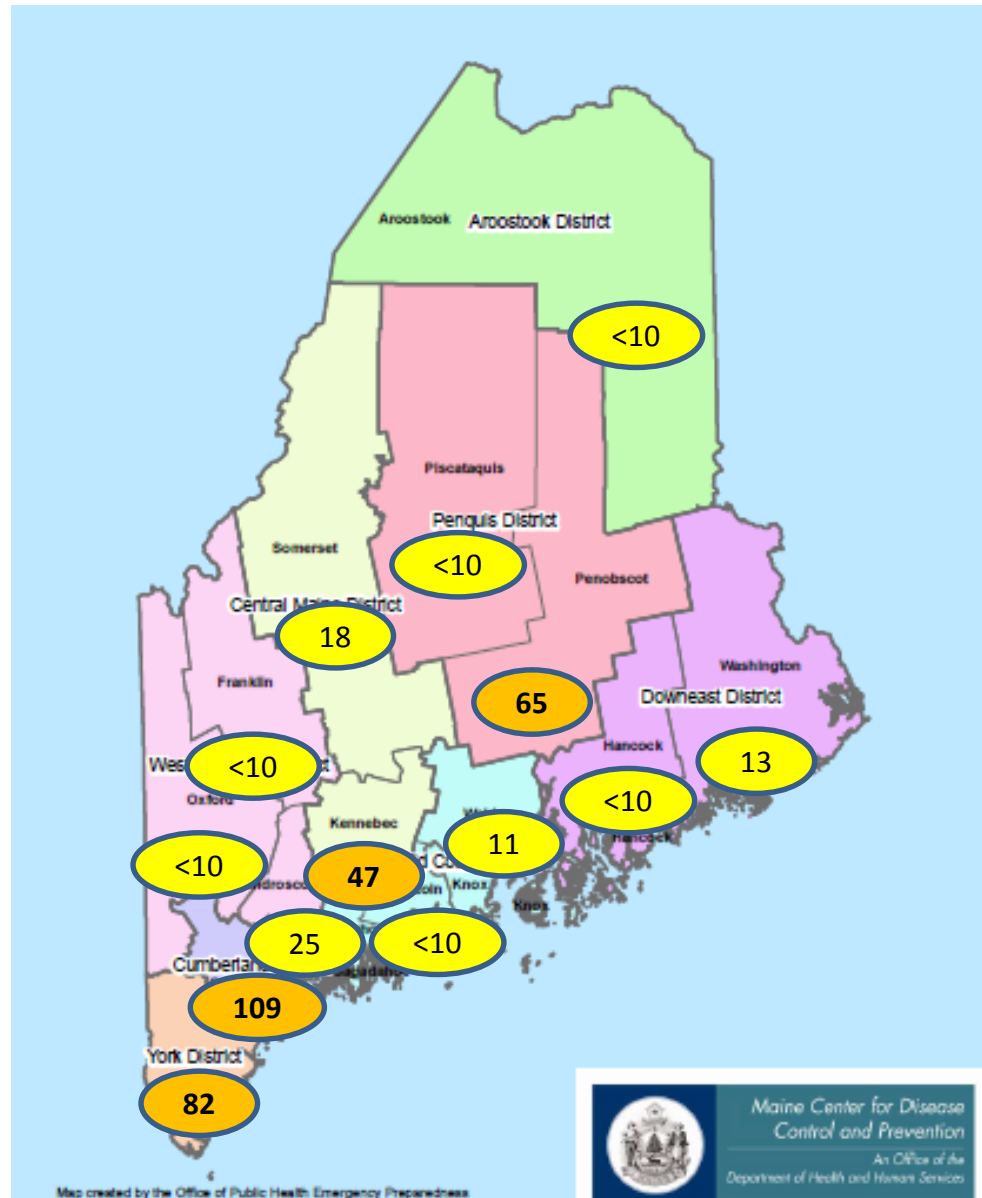


SOURCES: Office of the Maine Attorney General

STAFF GRAPHIC | MICHAEL FISHER

# 2017 Overdose Deaths by County

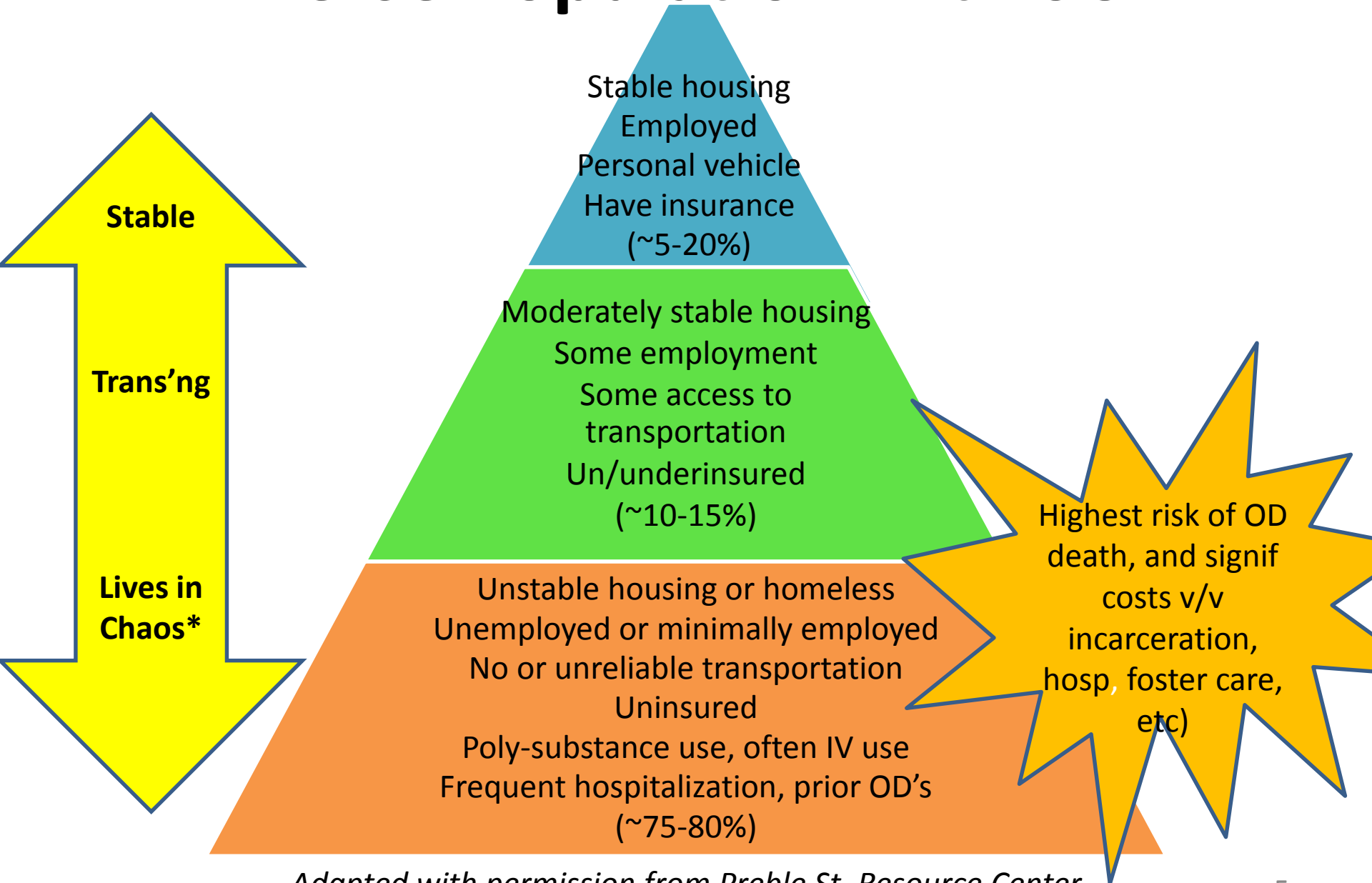
[2017 Drug Deaths Report](#)  
 – ME Attny Gen's Office



Deaths proportional to population size

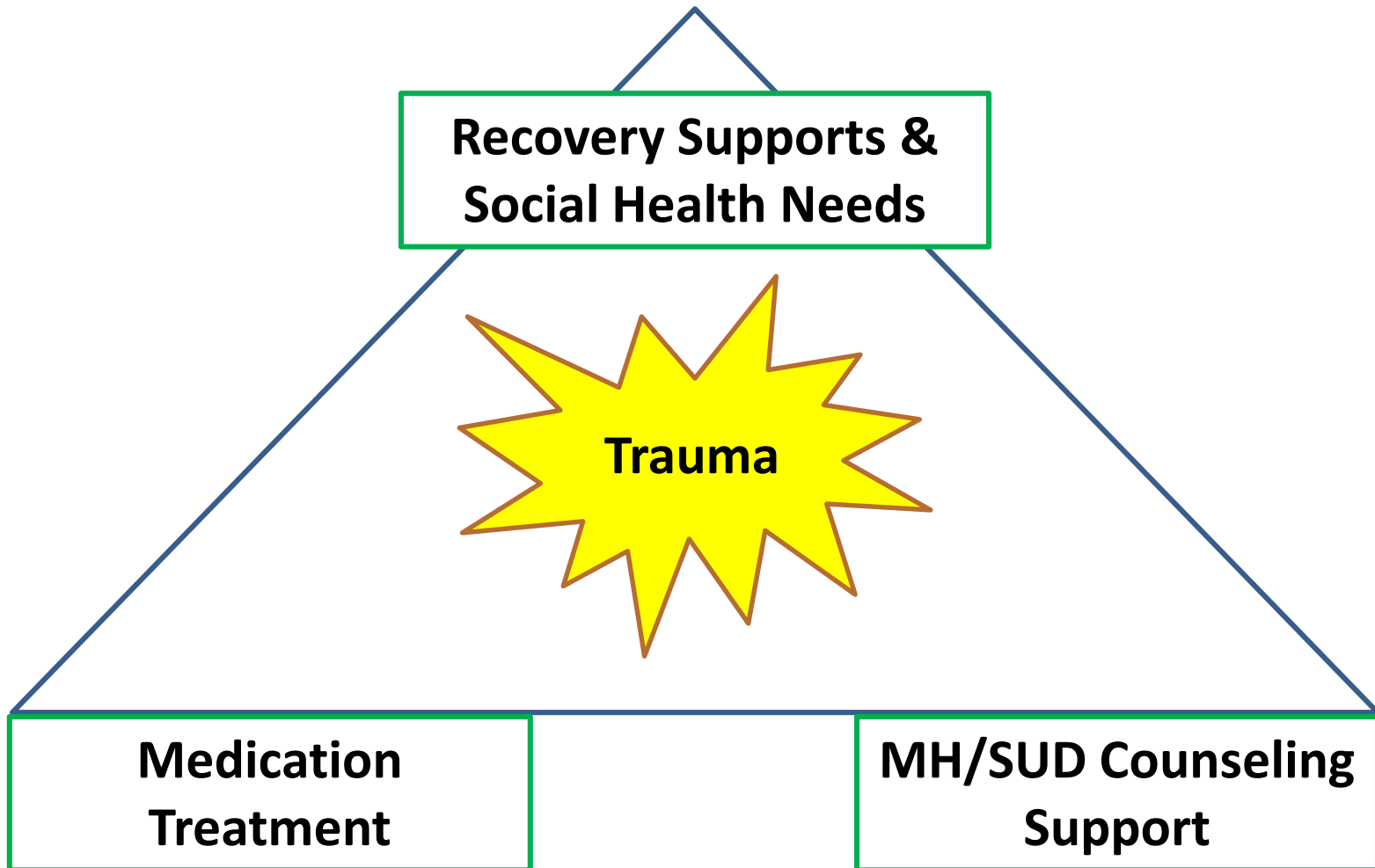
Deaths higher than proportion to population size

# Diverse Population with SUD



*Adapted with permission from Preble St. Resource Center*

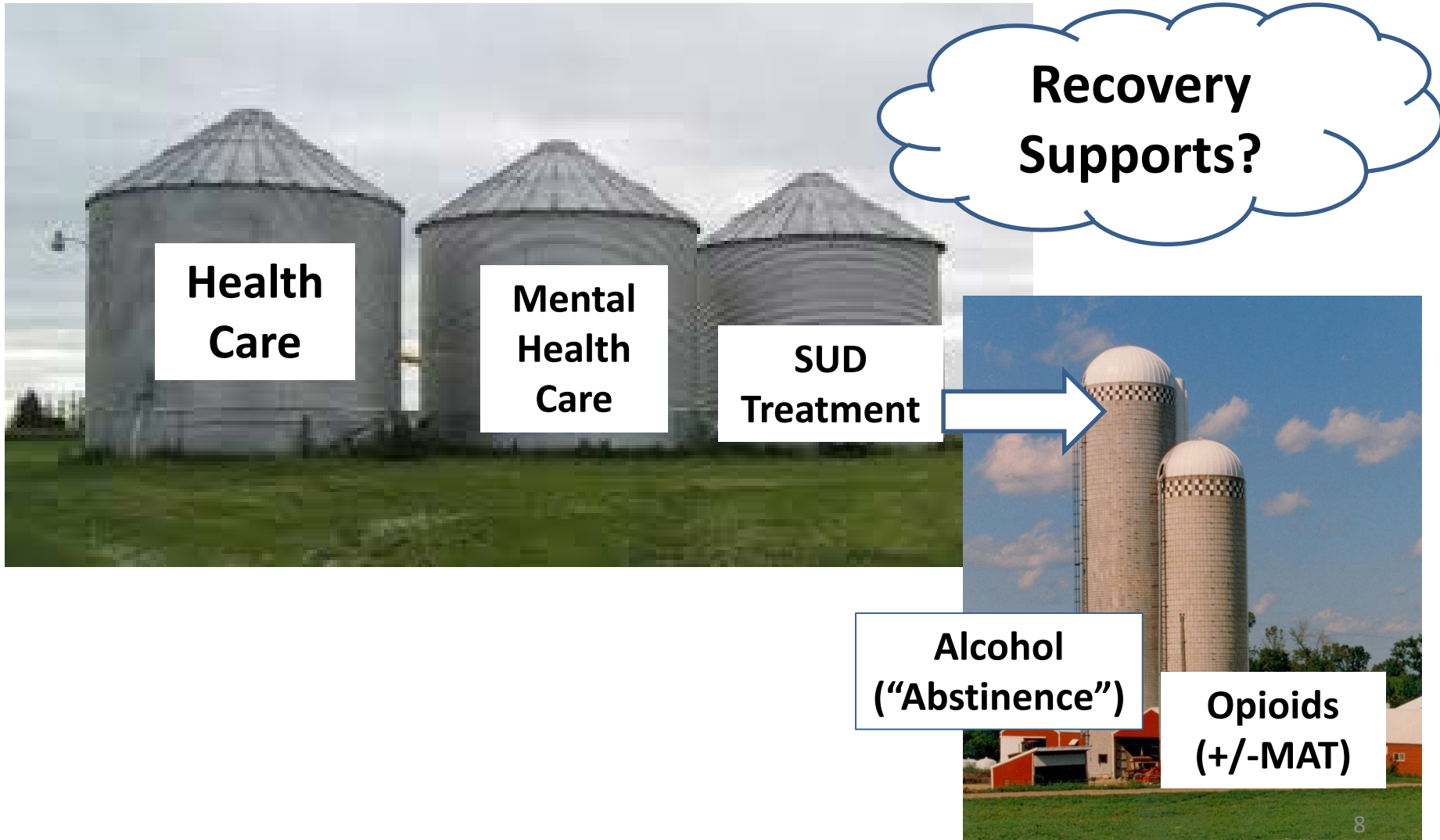
# Defining Systems of Care & Recovery



# MAT in Maine: State of the State

- Maine (Jan 2017, SAMHSA): 634 buprenorphine prescribers
  - 348 docs with 30 pt limit
  - 145 docs with 100 pt limit
  - 38 docs with 275 pt limit
  - 88 NPs (initial 30 pt limit)
  - 15 PAs (initial 30 pt limit)
- Historically...
  - ~30% with X-waiver publicly post info on SAMHSA website
  - ~50% providers with X-waiver ever prescribe (nationally)
  - ~50% of those prescribe treat only 1-4 patients

# A Siloed Landscape of Care





# Maine's MAT Landscape

- Opioid Treatment Centers (OTCs)/methadone rx
- Community-based SUD treatment organizations
- Health system efforts
- Other hospital-based efforts
- FQHCs
- Behavioral health organizations
- VA system
- Private practices (psych, addiction, primary care)
- “Cash only” practices

# Wide Range of MAT Practices & Pts

- Most accept insurance & offer sliding scale billing
  - *But* growing number of “cash-only” private practices
- Access to state funds to provide slots for uninsured
  - Variable access statewide
  - SAMHS funds for uninsured, some through OHHs
- Low → high barriers to access
- Same day → days/weeks (wait list) for access
- Widely variable orientation towards eventual abstinence vs. promoting harm reduction

# Opioid Treatment Providers (OTPs)

- Federal & state-recognized designation
- 7 organizations , 11 locations
- Offer methadone (daily dosing)
- Most also offer buprenorphine
- Two now MaineCare Opioid Health Homes
- All but one (Acadia/EMHS) are for-profit organizations

# Community-Based SUD Tx / MAT Providers

- Buprenorphine, +/- naltrexone prescribers
- Most offer counseling on-site
  - Some IOP, group, and/or individual counseling
- Most accept insurance, MaineCare
- May get SAMHS and/or other funds for uninsured
- Mix of non-profit & for-profit org's – e.g.
  - Catholic Charities of ME (Portland, Lewiston)
  - ENSO (Portland, Sanford)
  - Grace St (Lewiston)
  - 3-Key West (Lewiston, Biddeford)
  - Recovery Connections of ME (Lewiston)
  - SMART Child & Family Svcs (Windham, Biddeford)
  - Blue Willow
  - Groups (8 locations)

# Hospital-Based Health Systems

- CMMC
  - Early efforts in Family Medicine Residency
  - Some highly engaged primary care sites (e.g. Bridgton IM)
- EMHS
  - Acadia serves as addiction specialty treatment
  - EMMC Family Medicine Residency
  - Some other primary care maintenance providers
- MaineGeneral
  - ME-Dartmouth Family Residency
  - Commitment to grow number primary care providers
- MEHlth/MBHC: developing “hub & spoke” system of specialty & maintenance providers
- MidCoast-Parkview
  - MidCoast Addiction Resource Center
  - Primary care maintenance providers

# Other Hospital-Based Efforts

- St Mary's BH – addiction specialty inpt & OP MAT
- Bridgton/Rumford
  - Bridgton Internal Medicine/ Crooked River Counseling
- Healthy Acadia/Downeast SU Treatment Network
  - Developing “hub & spoke” system with MDI, Maine Coast Memorial, Blue Hill Hosp
- York Hospital & York Recovery Center
  - All primary care practices becoming MAT providers
- Mayo Regional
  - Several primary care maintenance providers
- Redington Fairview General Hospital
  - Early efforts to develop community capacity

# FQHCs

- Penobscot Community Health Care
  - Seaport Health Center
  - PCHC Brewer, Union St, Old Town, Hope House
- HealthReach Health Centers (9 of 11)
- Greater Portland Health
- Health Access Network
- Sacopee Valley Health Center
- Lubec Regional Medical Center
- Other?

# Maine VA System

- All SUD dx, treatment through BH Dept
- 6 psychiatrists see patients through consult service
- Provide MAT services at Togus & all CBOCs
- No primary care MAT prescribing



# Private MAT Practices

- Psychiatrists, addiction medicine, primary care
- Some accept private insurance, MaineCare
  - Martins Point
  - ME Recovery Center (Drs. Jorgensen, Landry, Manchester)
- Many “cash-only” practices (e.g. \$200-\$300/visit)- e.g.
  - Mark Publicker MD (Portland)
  - Casco Bay Medical (Drs. Lazos, Spiegel - Portland)
  - Sisu Health (Dr. Kozma - Portland)
  - Gary Ross DO (Brewer)
  - Be Well My Friend (Augusta)
  - Many, many other doc’s (esp. solo practices)...

# Behavioral Health Organizations

- Most offer SUD counseling, but not MAT
  - Of ~200 SAMHS-contracted organizations offering SUD counseling, only ~6% offer MAT
- Some BH org's offer MAT – e.g.
  - AMHC, in partnership with Pines, other primary care providers
  - Kennebec Behavioral Health
  - Maine Behavioral Health Care, MMC McGeachee Hall
  - TriCounty MH – in development, partnering with community MAT prescribers

# Covering SUD Tx for Uninsured

- DHHS/SAMHHS reimburses costs for limited numbers of uninsured thru contracts with targeted SUD/MAT providers
- Funding comes from federal (SAMHSA) block grant & other funds
- Currently 18 organizations have state contracts providing funds to provide SUD counseling & MAT meds for ~800 uninsured across state
  - Health systems - e.g. MH/MBHC; MEGeneral
  - Independent BH/SUD org's - e.g. AMHC, Crooked River, Key3 West
  - Methadone clinics -e.g. CAP Quality Care, Discovery House, Merrimac River Health Care
  - Other – e.g. PCHC (Penob Cnty Jail pilot), York County Shelter

# Community-Based Efforts

Several community-based across state to expand SUD treatment, MAT capacity – e.g.

- Bangor Community Health Leadership Board
- Downeast & Washington County Substance Treatment Networks
- Lakes Region Substance Abuse Coalition
- Lewiston-Auburn collaborative
- Greater Portland Addiction Collaborative
- York Recovery Center